

**POV**<sup>®</sup> The Modular Mesh House



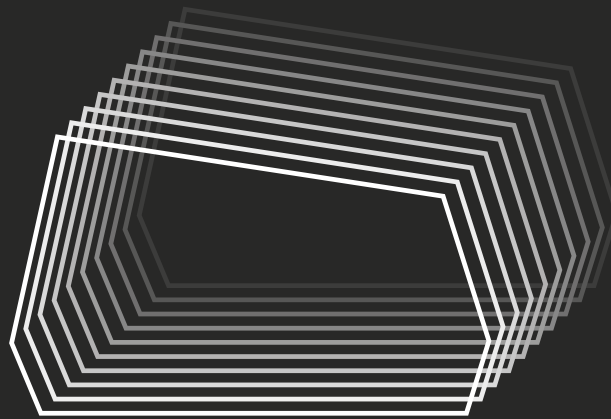
Buitink-Technology©2019

# The Modular Mesh House

By Buitink Technology



English



**POV**<sup>®</sup> The Modular  
Mesh House



Buitink-Technology©2019



Buitink-Technology©2019



Buitink-Technology©2019

# Welcome to POV®



## **POV®**

### **The Modular Mesh House**

We proudly present to you the iconically designed POV®: the ideal location and base for office, recreation, living, working, relaxing or holiday.

#### **Iconic design and personal**

The POV® makes surrealism a reality and stands for design, experience, comfort and sustainability.

Our design features an exciting, semi-transparent second skin façade, which encloses the underlying space like an envelope and gives the whole a surreal and mysterious appearance.

This second skin façade can also be fully personalised: the outer skin can be made in many colours and materials and can also be printed as desired. In that way, you can use every POV® to blend in with its surroundings or to make it stand out from the crowd!

#### **Sustainable and comfortable**

POV® is synonymous with comfort thanks among other things to the high insulating properties and the second skin façade. The POV® is extremely comfortable and suitable for use during all seasons or even for permanent living. Not only in Europe, but also far beyond!

POV® is sustainable:

- The construction consists of a sustainable timber frame construction (FSC certified);
- The insulation value is very high: For example, POV® Lodge has an (average) U-value of 0.42 W/m<sup>2</sup> K;
- The inner walls, outer wall and second skin façade are made of lightweight, durable coated fabric by Serge Ferrari;
- A second skin façade/climate façade is standard;
- The power consumption is optionally regulated by means of a smart grid;
- Solar panels are available as an option.

The second skin façade (climate façade) with which each POV® is equipped consists of a gauze cloth

that is stretched at a distance from the underlying construction.

Not only does this create an iconic, distinctive, double-curved and unique shape, but this climate façade has even more advantages:

- Less heating in winter;
- Lower cooling load in summer;
- No direct radiation of sunlight through the windows in the side walls;
- The windows can be opened, without any direct strong wind or rain being able to blow in.

#### **Multifunctional and modular**

POV® has a modular structure and offers endless possibilities. We've already thought of six for you: POV® Room, POV® Studio, POV® Cosy, POV® Lodge, POV® Cover and POV® Office.

A POV® is made up of standard modules and all sizes are geared towards transport by means of trailers and/or standard sea containers. In that way, the POV® can be delivered anywhere in the world.

You have complete freedom to determine the setup of a POV®. If you'd like, our specialists can help you with this.

We have already made a number of impressions for you! These can be found later on in the brochure.

The outer shell (second skin facade) can also be ordered as a separate element and then serves as a patio roof or canopy: the POV® Cover.

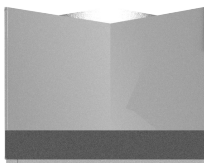
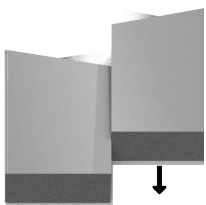
#### **The POV® feels at home everywhere.**

# Why POV®?

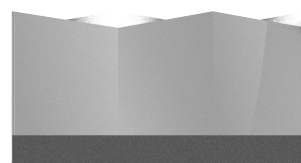
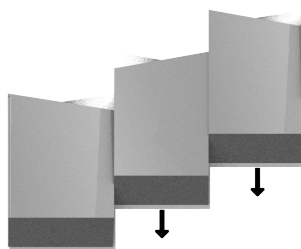
1

## Infinite possibilities

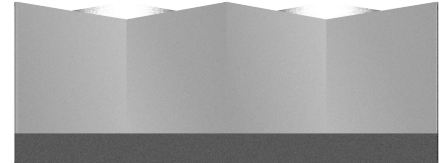
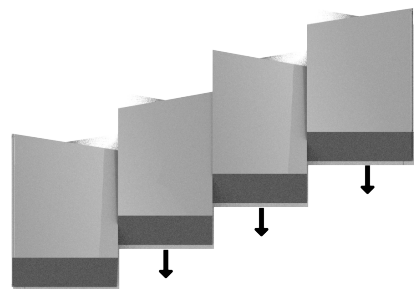
Thanks to the modular structure, you can choose how many modules you want.



POV®Cosy



POV®Studio



POV®Lodge

2

## Easy to personalise

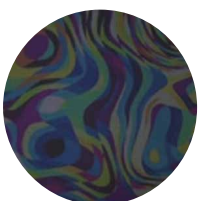
Because printed cloth is used, you can choose which colour and/or pattern you want to have.

Our printer offers a 10 year guarantee on top quality prints. For more inspiration, click below:

[Roof bus station Zwolle](#)

[Textile facade cladding for Cheops Technology](#)

### Design samples:



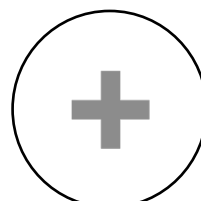
Psychedelic



Desert



Cracks

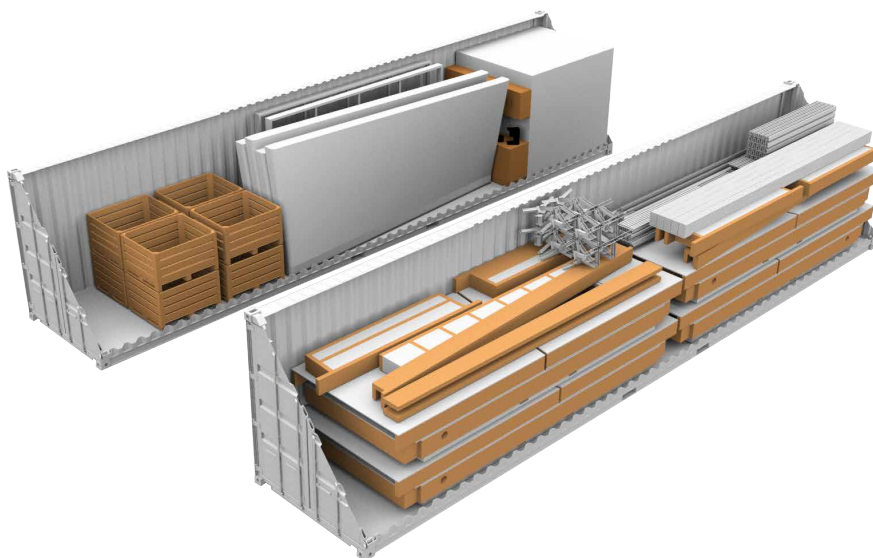
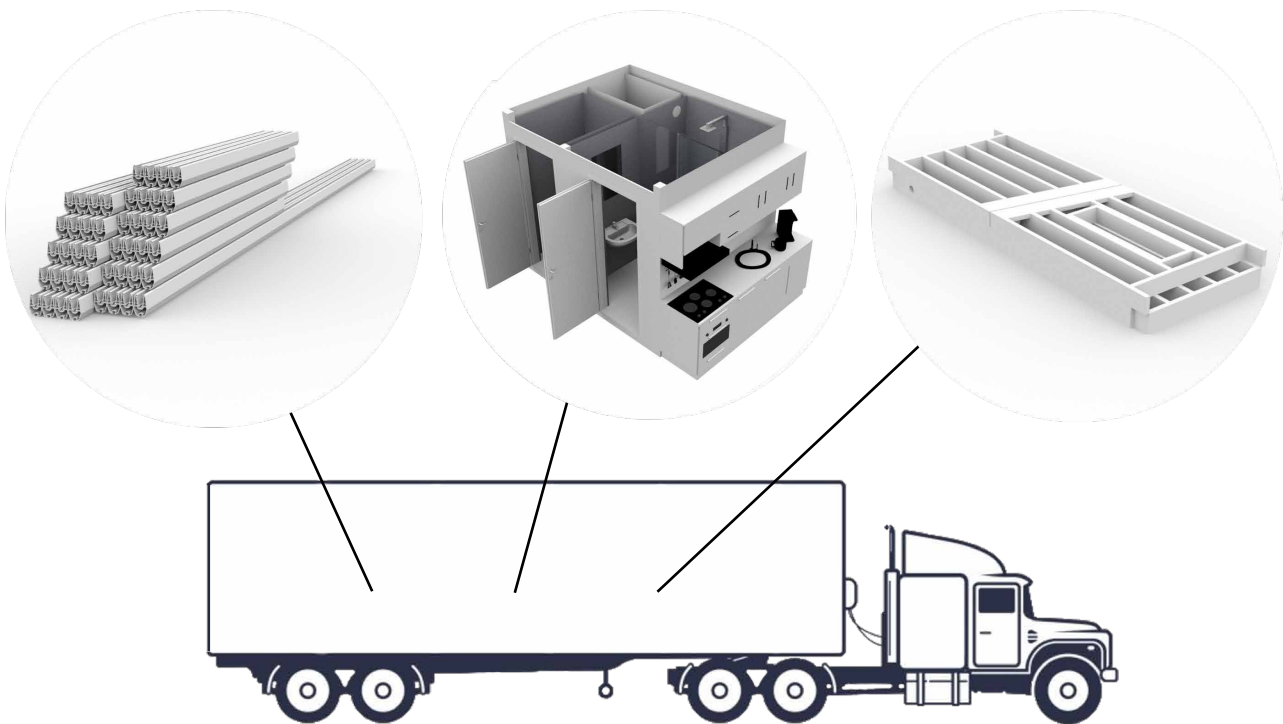


Make your own design.

3

## Easy to transport

The parts of the POV® are designed to be transported with a standard truck or in a 40 ft. container.



# Why POV®?

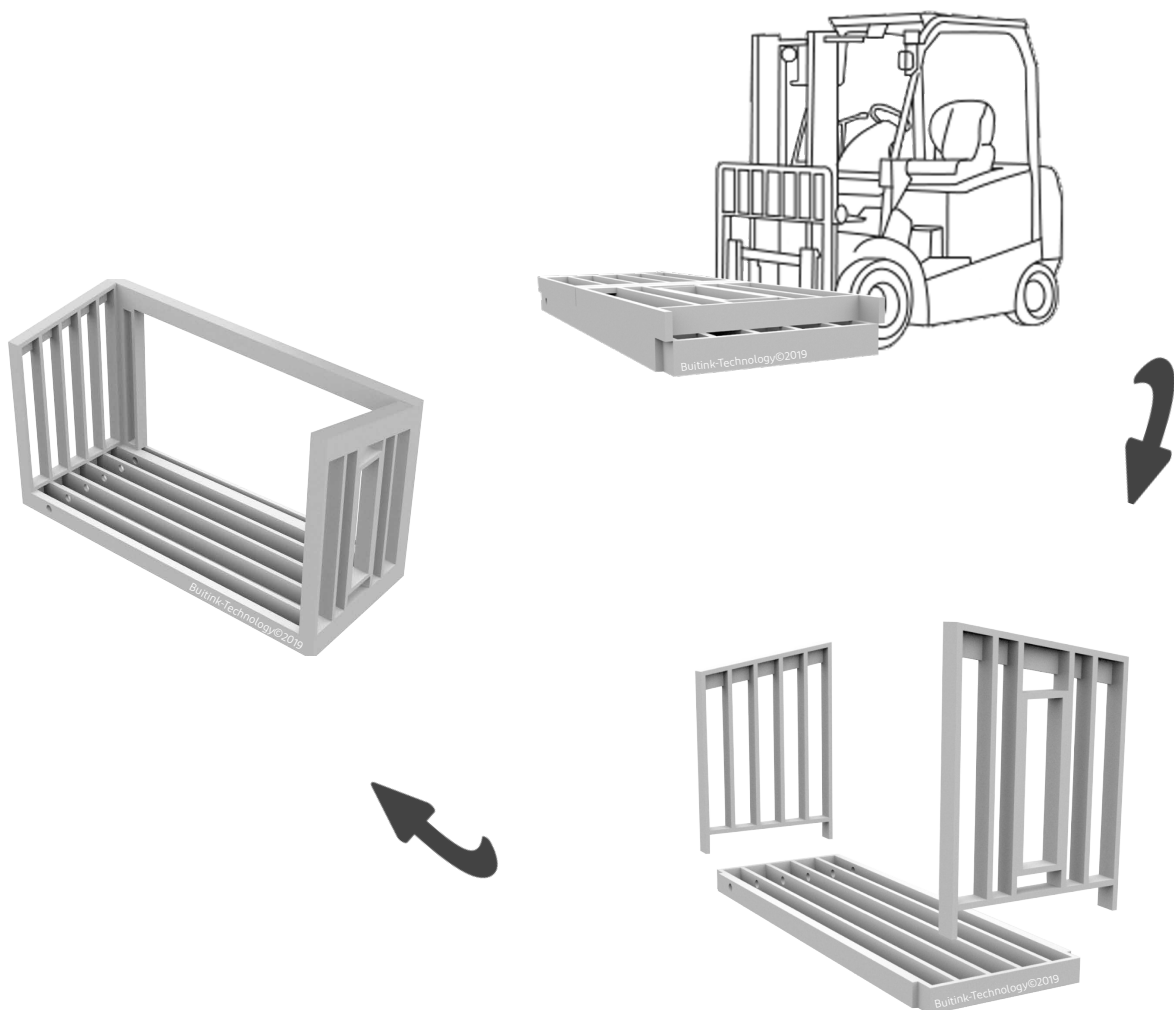
4

## Easy to install

Our accommodations are easy to place using a forklift truck.

Because the POV® is equipped with adjustable feet, it is easy to level the POV®.

All pipes are integrated in the POV®. The sanitary module is equipped with simple connection options.





5

## Suitable for all seasons

The high insulation values of the POV® enable you to enjoy a pleasant climate all year round.



# POV<sup>®</sup> Room

2 Persons



	<u>Living space</u>	<u>Total space</u>
Length	2,25m	2,75 m
Width	5,50 m	7,40 m
Height	2,47 m - 2,87 m	3,37 m - 3,77 m
square meter	12,40 m <sup>2</sup>	20,40 m <sup>2</sup>
Volume	33,04 m <sup>3</sup>	

<u>Sleeping area</u>	<u>Living space</u>	<u>Technical room</u>	<u>Insulation values</u>
- Double bed - Storage cupboard	- Sofa - Coffee table	- Meter cabinet	- Average U-value= 0,84 W/ m <sup>2</sup> K - Average Rc-value= 1,19 W/ m <sup>2</sup> K

# POV® Cosy

2 Persons



Buitink-Technology©2019

## Living space

## Total space

Length	4,50 m	5,00 m
Width	5,50 m	7,40 m
Height	2,47 m - 2,87 m	3,37 m - 3,77 m
square meter	24,80 m <sup>2</sup>	37,00 m <sup>2</sup>
Volume	66,08 m <sup>3</sup>	

## Sleeping area

- Double bed
- Bedside tables
- Storage cupboard

## Sanitair unit

- Separate toilet
- Spacious shower
- Washbasin
- Storage cabinet
- Towel dryer
- Technical space

## Living space

- Sofa
- Coffee table

## Technical room

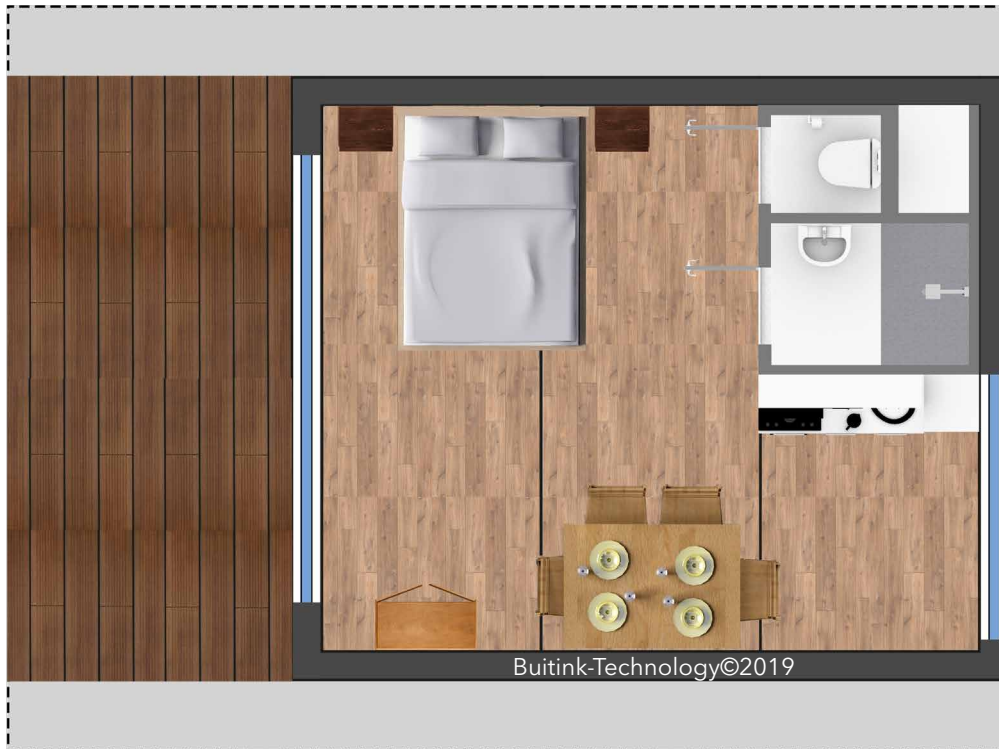
- Air heating
- Air cooling
- 80-litre boiler
- Meter cabinet

## Insulation values

- Average U-value= 0,60 W/ m<sup>2</sup> K
- Average Rc-value= 1,67 W/ m<sup>2</sup> K

# POV® Studio

2 Persons



	<u>Living space</u>	<u>Total space</u>		
Length	6,75 m	7,25 m		
Width	5,50 m	7,40 m		
Height	2,47 m - 2,87 m	3,37 m - 3,77 m		
square meter	37,13 m <sup>2</sup>	53,70 m <sup>2</sup>		
Volume	99,12 m <sup>3</sup>			
<b><u>Sleeping area</u></b>	<b><u>Sanitair unit</u></b>	<b><u>Living space</u></b>	<b><u>Technical room</u></b>	<b><u>Insulation values</u></b>
- Double bed	- Separate toilet	- Kitchenette	- Air heating	- Average U-value=
- Bedside tables	- Spacious shower	- Quooker	- Air cooling	0,49 W/ m <sup>2</sup> K
- Storage cupboard	- Washbasin	- Combi microwave	- 80-litre boiler	- Average Rc-value=
	- Storage cabinet	- Hot plate	- Meter cabinet	2,04 W/ m <sup>2</sup> K
	- Towel dryer	- Refrigerator/ Freezer		
	- Technical space	- Dishwasher		
		- Sink		
		- Dining table		
		- Dining chairs		

# POV® Lodge

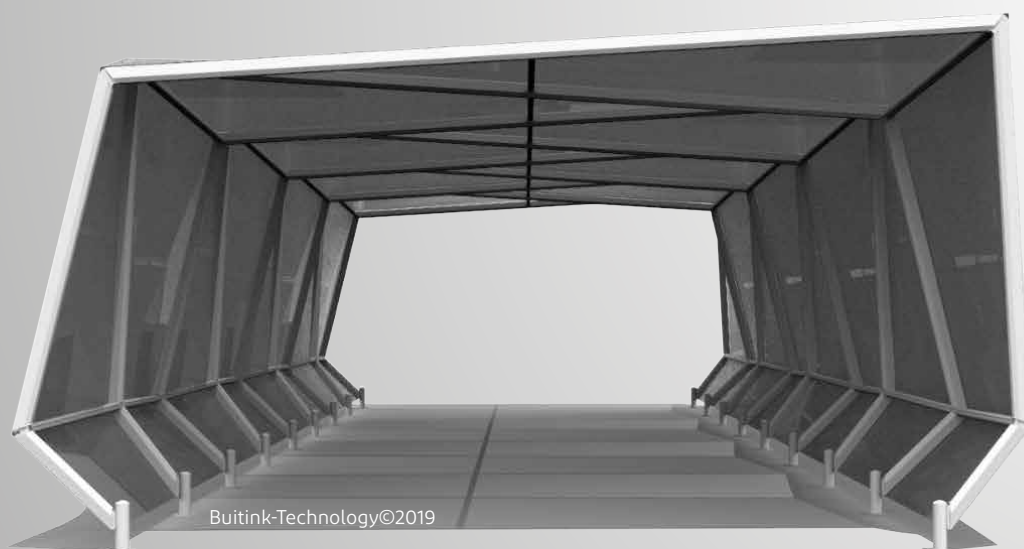
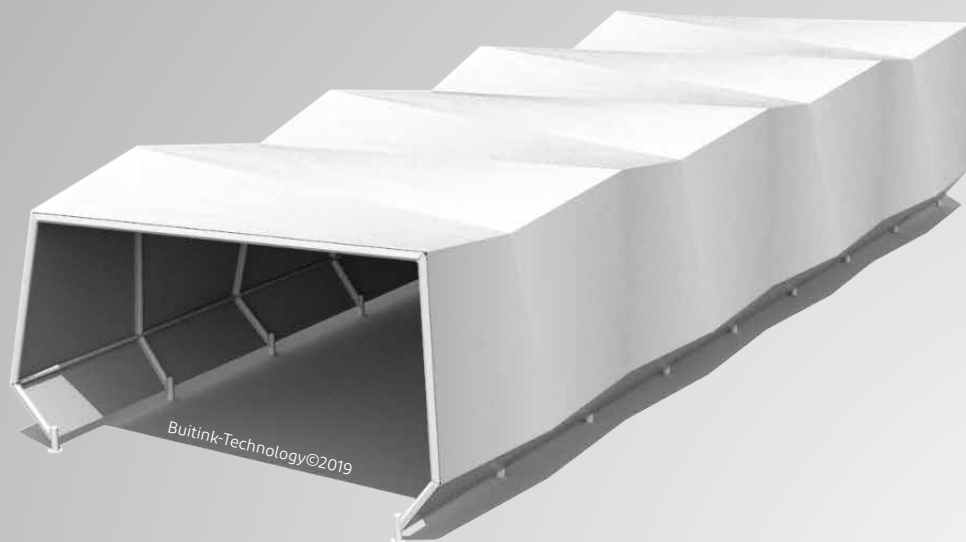
2-4 Persons



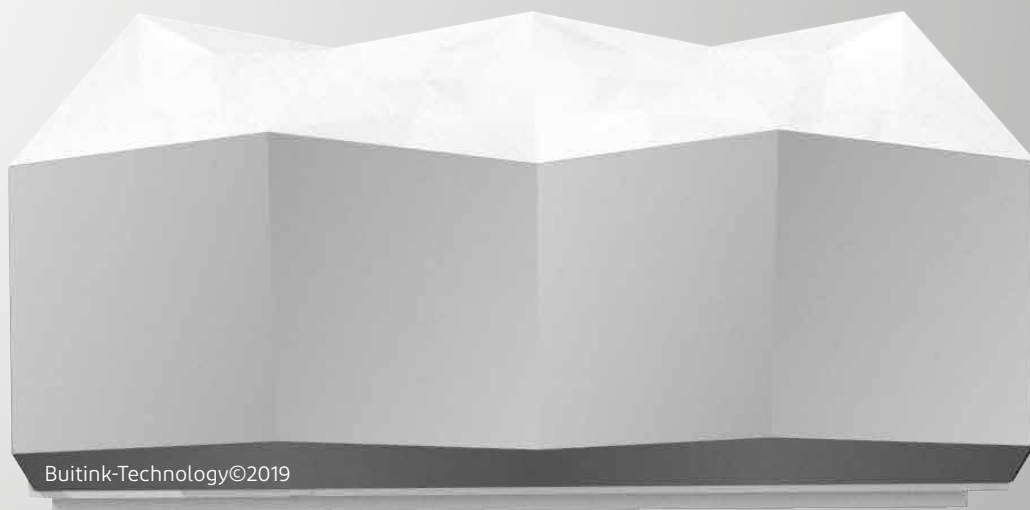
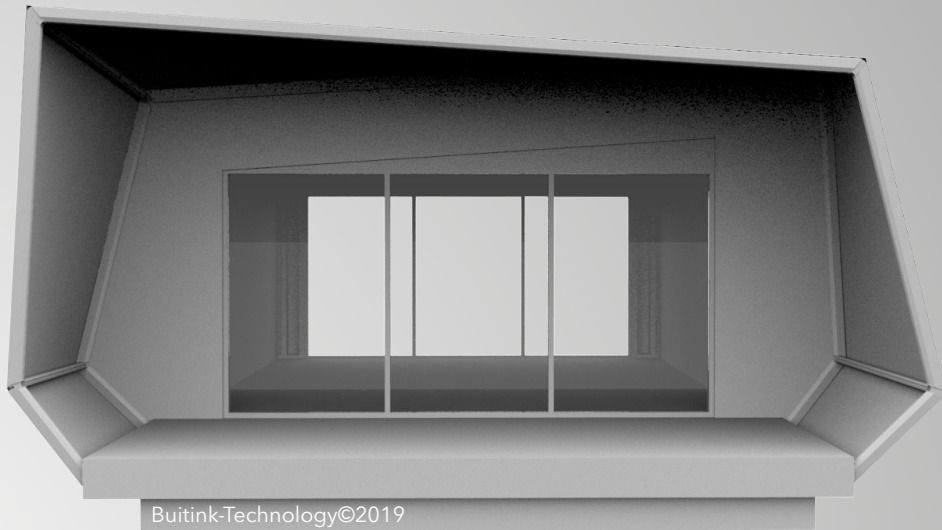
	<u>Living space</u>	<u>Total space</u>
Length	9,00 m	9,50 m
Width	5,50 m	7,40 m
Height	2,47 m - 2,87 m	3,37 m - 3,77 m
square meter	49,50 m <sup>2</sup>	70,30 m <sup>2</sup>
Volume	124,74 m <sup>3</sup>	

<u>Sleeping area</u>	<u>Sanitair unit</u>	<u>Living space</u>	<u>Technical room</u>	<u>Insulation values</u>
<ul style="list-style-type: none"> <li>- Double bed</li> <li>- Extra bunk bed</li> <li>- Bedside tables</li> <li>- Storage cupboard</li> </ul>	<ul style="list-style-type: none"> <li>- Separate toilet</li> <li>- Spacious shower</li> <li>- Washbasin</li> <li>- Storage cabinet</li> <li>- Towel dryer</li> <li>- Technical space</li> </ul>	<ul style="list-style-type: none"> <li>- Kitchenette</li> <li>- Quooker</li> <li>- Combi microwave</li> <li>- Hot plate</li> <li>- Refrigerator/ Freezer</li> <li>- Dishwasher</li> <li>- Sink</li> <li>- Dining table</li> <li>- Dining chairs</li> <li>- Sofa</li> <li>- Coffee table</li> </ul>	<ul style="list-style-type: none"> <li>- Air heating</li> <li>- Air cooling</li> <li>- 80-litre boiler</li> <li>- Meter cabinet</li> </ul>	<ul style="list-style-type: none"> <li>- Average U-value= 0,43 W/ m<sup>2</sup> K</li> <li>- Average Rc-value= 2,38 W/ m<sup>2</sup> K</li> </ul>

# POV<sup>®</sup> Cover



# Point Of Views



# Artistic impressions



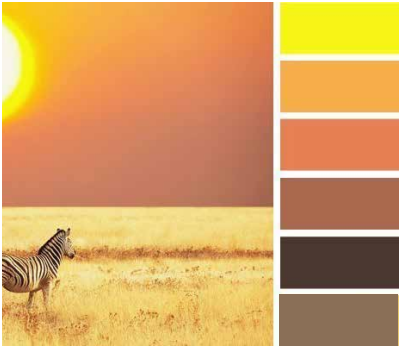
Botanical



Desert



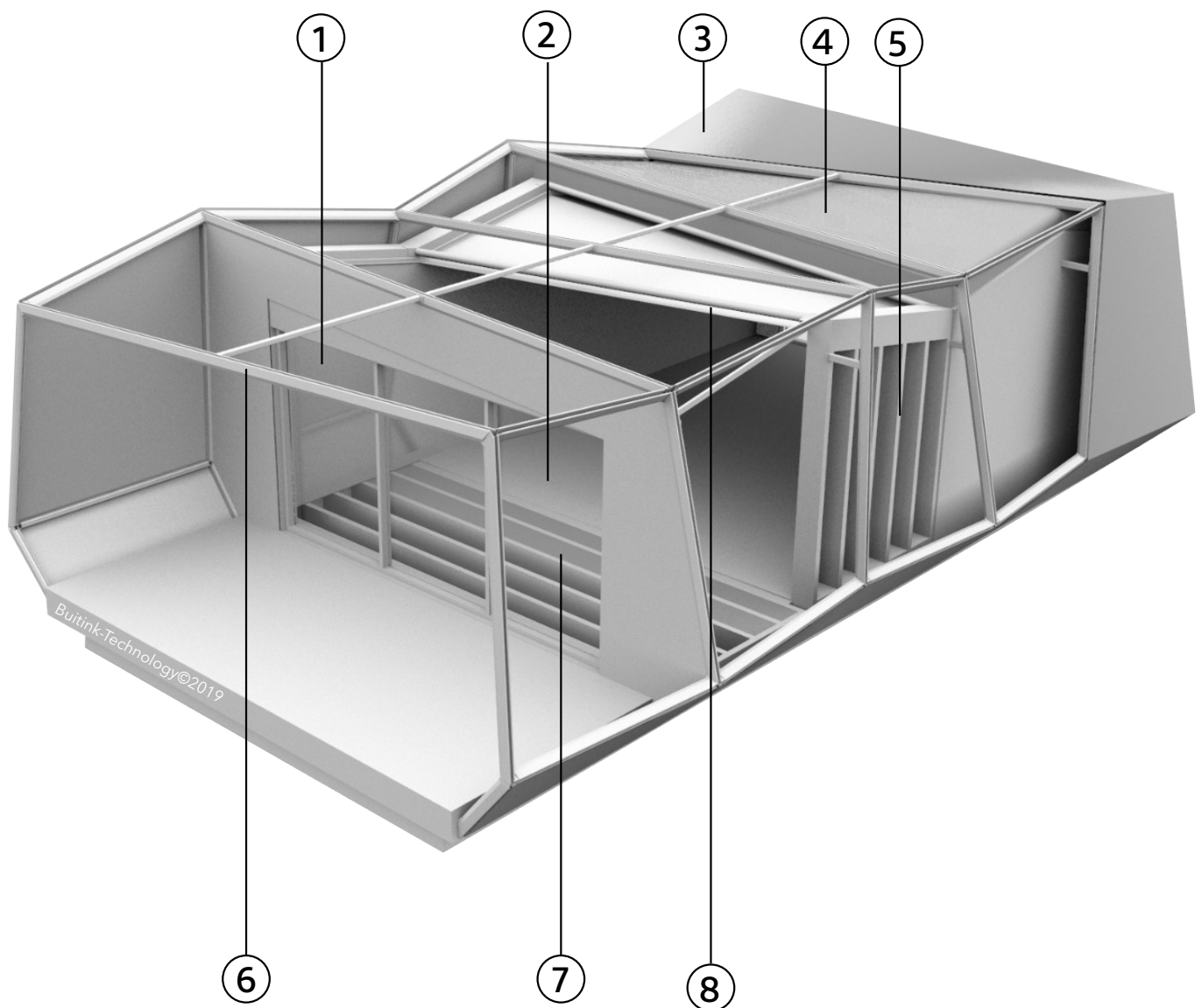
# Africa



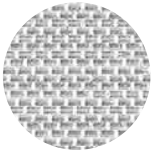
# Beach



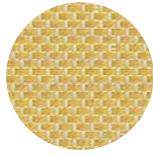
# Specifications



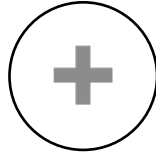
## 1. Interior fabric samples



Batyline  
Eden  
7710-50567



Batyline  
Eden  
7710-50968



[Click here  
for more  
options.](#)

## 2. Sample floor

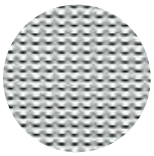


Different flooring  
options to choose from.



Choose your own style,  
there are lot of other  
options!

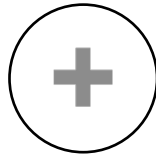
## 3. Outdoor fabric samples



Frontside  
view  
381-3121

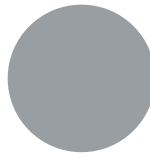


Frontside  
view  
381-3111

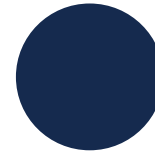


[Click here  
for more  
options.](#)

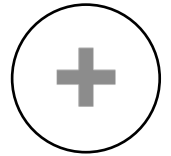
## 4. waterproof outer cloth



Flexlight  
lodge  
6002-20024



Flexlight  
lodge  
6002-20024



[Click here  
for more  
options.](#)

## 5. Construction



Timber frame  
construction

Wooden beams:  
W\*H= 70 mm\*250 mm

## 7. Insulation



Insulation material for an optimal  
room climate

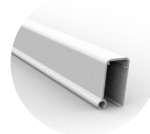
Insulationvalues:

Walls	= U-value 0,22 W/m <sup>2</sup> *K
Floor	= U-value 0,17 W/m <sup>2</sup> *K
Ceiling	= U-value 0,17 W/m <sup>2</sup> *K
Windows	= U-value 1,65 W/m <sup>2</sup> *K
Doors	= U-value 1,65 W/m <sup>2</sup> *K
Façade	= U-value 1,65 W/m <sup>2</sup> *K

## 6. Profiles



Aluminium Profile for  
clamping the exterior  
fabric.



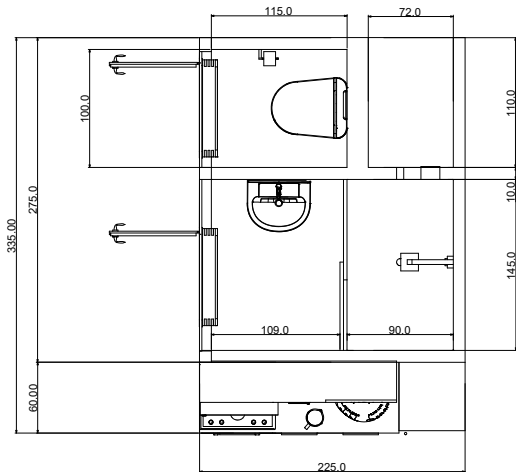
Aluminium Pro-  
file for clamping  
the interior fabric.

## 8. Brackets



Steel outriggers for ab-  
sorbing the large forces  
that occur during the  
stretching of the fabric.

# Specifications



Buitink-Technology©2019

## Bathroom

### 1. Shower Drain



- Easy Drain Compact
- Brushed stainless steel
- Tightly finished in the floor

### 3. Shower set



- Idealrain Standard Shower Set
- Rain shower
- Chrome look

### 2. Bathroom furniture



- Comfort Line York Slim
- Large mirror
- Heated mirror
- Modern sink
- H \* B \* L = 520 \* 800 370 mm

### 4. Toilet



- Ideal Standard Wall-mounted WC
- Built-in reservoir
- 6-7.5 liters of rinse

# Kitchenette

## 1. Quooker



- Boiling water, hot water and cool water;
- 3 l of boiling water (100 °C)
- Energy rating A
- child lock

## 2. Siemens Combi microwave



- Siemens CP565AGS0
- Power 1000W
- LCD Display
- Easy to clean

## 3. Siemens hot plate



- Siemens EU611BEB1E
- 1 Phase
- Property detection
- Safety shutdown

## 4. Siemens refrigerator/freezer



- Siemens KI18LV52
- Energy rating A+
- 191 kW/hour
- Volume 131 l

# Technical space

## 1. Boiler



- Bosch
- 80-litre
- 230 Volts
- 50 HZ
- 8 pressure

## 2. Heat recovery unit



- S&P
- 68% Efficiency
- Rotatable 360°
- Humidity regulation
- 24 dB

## 3. Air heating and air cooling



- Mitsubishi
- Capacity 4,0 kW;
- Energy rating A+
- 230 volts
- Subsidiabel EIA 2019

## 4. Solar Panels



- 9 panels
- 300 W per panel
- Expected proceeds 2,200 kWh per year

# Buitink Technology

*Advanced Lightweight structures*



## About us

Buitink Technology is specialized in the development, production, delivery and installation of products and turn key solutions where canvas, foil and technical textiles are involved. We focus on area's of construction, architecture, industry and various other markets where our products have added value to the customer.

## Innovation

Creating new and innovative solutions are part of our primary company policy. It's a major part of our daily business.

Examples are e.g.

- Air cushion roofs of ETFE foil
- Mobile impervious floor
- Tensioned membrane constructions
- Lifting cushions
- Tensioned ceilings
- Large scale lightning frameworks

There are numerous applications where canvas, foil and/or technical textiles play a major role.

# Projects



Lily trees membranes Singapore



Lifting bags for salvaging heavy goods



Roof bus station Zwolle



Canopy bus station Leidsche Rijn Centre



Marcel Wanders, Marcelwanders.com



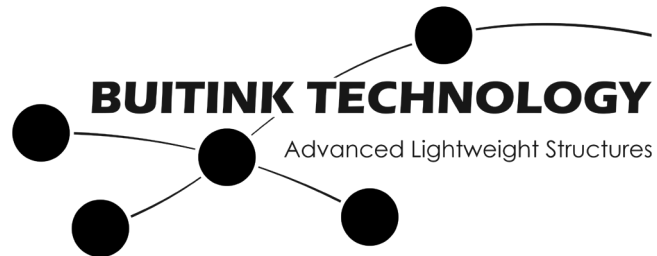
ETFE domes station Utrecht



Facade cladding This Is Holland pavilion



ETFE cladding exterior canopy Bordeaux



## Contact

Typograaf 1  
6921 VB Duiven  
The Netherlands

Sales@buitink-technology.com  
+31 (0)316 - 250 830  
www.buitink-technology.com

All the information in this brochure has been compiled with the utmost care. While Buitink Technology is committed to providing accurate and up-to-date information in this brochure, it cannot guarantee that the information is correct at the time of receipt of this brochure, or that the information will continue to be correct over time. For this reason, the authors expressly reject any form of liability for any damage, whether direct or indirect, resulting from the information provided.

All data and designs contained in this brochure are protected by intellectual property law. No part of this brochure may be used for any other purpose without prior written permission. We will take legal action if we receive signals about content that violates this right.